

4

3

2

1

REVISIONS

REV	DESCRIPTION	DATE	APPROVED
A	INITIAL RELEASE	25AUG20	J. GEALON
B	ECR-104644	25OCT21	J. SATSATIN
C	ECR-107112	22FEB22	J. SATSATIN

SPECIFICATIONS:

ROHS COMPLIANCE NOTE: HOMOGENOUS MATERIALS IN THIS BOARD SHALL BE COMPLIANT THE EU RoHS DIRECTIVE 2002/95/EC

MATERIALS; ALL LAMINATES AND BONDING MATERIALS SHOULD BE SELECTED FROM IPC-4101 OR IPC-4103, MINIMUM Tg>170degC, Td>300degC, U.L. RATING OF 94 V-0

MATERIAL FAMILY; ISOLA 370HR

CLADDING; EXTERNAL LAYERS .5 OZ. COPPER, OVERPLATE TO 1.5 OZ. INTERNAL PLANE LAYERS 1 OZ. COPPER.

NOTE: IF THE LAYER STACKUP CONFLICTS WITH THE ABOVE CLADDING SPECIFICATIONS THEN THE LAYER STACKUP SHALL TAKE PRECEDENCE.

SOLDER MASK; SHALL BE LIQUID PHOTOIMAGEABLE (LPI) APPLIED ON BOTH SIDES OVER BARE COPPER OR GOLD AND SHALL MEET IPC-SM-840 (LATEST REV.) CLASS 3. COLOR GREEN.

SILK SCREEN; SHALL BE PERMANENT NON-CONDUCTIVE EPOXY INK. COLOR: WHITE SYNTHETIC INKJET PRINTING ALLOWED FOR DENSE BOARDS, COLOR: WHITE

SURFACE FINISH; ENIG (ELECTROLESS NICKEL/IMMERSION GOLD) PER IPC-4552 LATEST REVISION

INTENTIONAL SHORTS; IF SUPPLIED DATA INCLUDES A FILE "READ_ME.2". THEN INTENTIONAL NET SHORTS EXIST. CUSTOMER REVIEW AND APPROVAL IS REQUIRED IF SUPPLIED DATA REPORTS ANY CONDITION THAT DOES NOT MATCH "READ_ME.2" FILE PROVIDED.

TEST REQUIREMENTS; 100% NETLIST ELECTRICAL VERIFICATION USING CUSTOMER SUPPLIED IPC-D-356 NETLIST FOR OPENS AND SHORTS WHEN "GERBER DATA" IS PROVIDED. THIS VERIFICATION ALSO REQUIRED FOR "ODB++" DATA PER EMBEDDED NETLIST.

REQUIREMENTS:

1. REFER TO IPC-6010 SERIES (LATEST REV.), CLASS 2 FOR FABRICATION UNLESS OTHERWISE SPECIFIED.

2. ACCEPTABILITY PER ANALOG DEVICES, INC. SPECIFICATION TST00115, (LATEST REVISION.)

3. MODIFICATIONS TO THE ARTWORK ARE NOT ALLOWED WITHOUT WRITTEN AUTHORIZATION.

4. HOLE PATTERN TOLERANCES FOR UNDIMENSIONED HOLES SHALL BE A DIAMETER OF 0.005 INCHES FROM THEIR TRUE POSITION.

5. PLATED HOLE WALL THICKNESS SHALL NOT BE LESS THAN 0.001 INCH MINIMUM AVERAGE, WITH NO READING LESS THAN .0008 BY CROSS SECTION.

6. HOLE DIAMETERS APPLY AFTER PLATING.

7. FINISHED CONDUCTOR WIDTHS SHALL NOT BE REDUCED FROM THE NOMINAL INDICATED ON THE MASTER PATTERN, BY MORE THAN THE CONDUCTOR THICKNESS.

8. MINIMUM DESIGN LINE WIDTH IS .008 INCH.

9. MINIMUM DESIGN SPACING IS .007 INCH.

10. ~~NON-FUNCTIONAL PAD REMOVAL FROM INNER SIGNAL LAYERS MAY BE PERFORMED AFTER CUSTOMER APPROVAL~~

11. IF PAD SIZES PROVIDED ARE NOT LARGE ENOUGH TO MAINTAIN ANNULAR RING REQUIREMENT, MFGR. MAY REQUEST APPROVAL TO TEAR DROP PADS TO MAINTAIN ANNULAR RING. (AT PAD TO TRACE INTERSECTION ONLY AND ELECTRICAL INTEGRITY MUST BE MAINTAINED.)

12. THIEVING MAY BE ADDED TO COMPENSATE FOR LOW COPPER DENSITY AREAS ON THIS DESIGN ONLY AFTER REVIEW AND APPROVAL FROM THE CUSTOMER:

A. THIEVING TO CARD EDGE, FIDUCIALS, NON-PLATED THROUGH HOLES, ALL OTHER FEATURES TO BE 0.200 INCH MINIMUM.

B. THERE SHALL BE NO THIEVING IN ANY AREAS FREE OF SOLDER MASK OR INTERNAL COPPER PLANES.

13. MFGR. TO LEGIBLY ETCH OR STAMP/SCREEN WITH PERMANENT NON-CONDUCTIVE INK ON SECONDARY SIDE IN A CLEAR AREA UNLESS OTHERWISE INDICATED;

A. U.L. CODE-FLAMMABILITY RATING

B. DATE CODE (STAMP).

C. LOT NUMBER

D. MFGR LOGO

E. SUCCESSFUL ELECTRICAL TEST.

14. REPAIRS PER IPC-7711/21 (LATEST REV.) ARE ALLOWED.

15. BOARDS TO BE SHIPPED IN ARRAY AND KEEP INTACT. PANEL TO BE SUBJECTED TO CUSTOMER'S APPROVAL.

4

3

2

1

4 LAYER STACKUP

NOMINAL FINISHED BOARD THICKNESS 0.086" +/- 10%

PRIMARY SILKSCREEN

PRIMARY SOLDER MASK

PRIMARY SIDE (LAYER 1)

L2_GND PLANE (LAYER 2)

L3_VCC PLANE (LAYER 3)

SECONDARY SIDE (LAYER 4)

SECONDARY SOLDER MASK

SECONDARY SILKSCREEN

HOLE TOLERANCE

UNLESS SPECIFIED PLATED: +/- 3MILS

DRILL CHART: TOP to BOTTOM

ALL UNITS ARE IN MILS

FIGURE	SIZE	PLATED	QTY	TOLERANCE/NOTES
+	10.0	PLATED	45	DIA MAX
◇	80.0	PLATED	4	

PRIMARY SIDE

UNLESS OTHERWISE SPECIFIED DIMENSIONS ARE IN INCHES	APPROVAL	DATE
TOLERANCES	TEMPLATE ENGINEER N/A	N/A
DECIMALS FRACTIONS ANGLES	HARDWARE SERVICES M. VALE	25AUG20
.XX --.010 --1/32 -- 2	HARDWARE SYSTEMS N/A	N/A
.XXX --.005	TEST ENGINEER N/A	N/A
.XXXX --.0050	COMPONENT ENGINEER M. YAN	25AUG20
MATERIAL	TEST PROCESS N/A	N/A
	HARDWARE RELEASE K. JABATAN	25AUG20
FINISH	DESIGNER M. VALE	25AUG20
	PTD ENGINEER J. GEALON	25AUG20
	CHECKER N/A	N/A
DO NOT SCALE DWG		

WWM DIVISION

804 WOBURN STREET

WILMINGTON, MA 01887

TITLE

FABRICATION LT6015HS5

CUSTOMER EVAL BOARD Z

SIZE

FSCM NO

DRAWING NUMBER

REV

C

24355

09 065727

C

SCALE

1 / 1

SHEET 1 OF 1

4

3

2

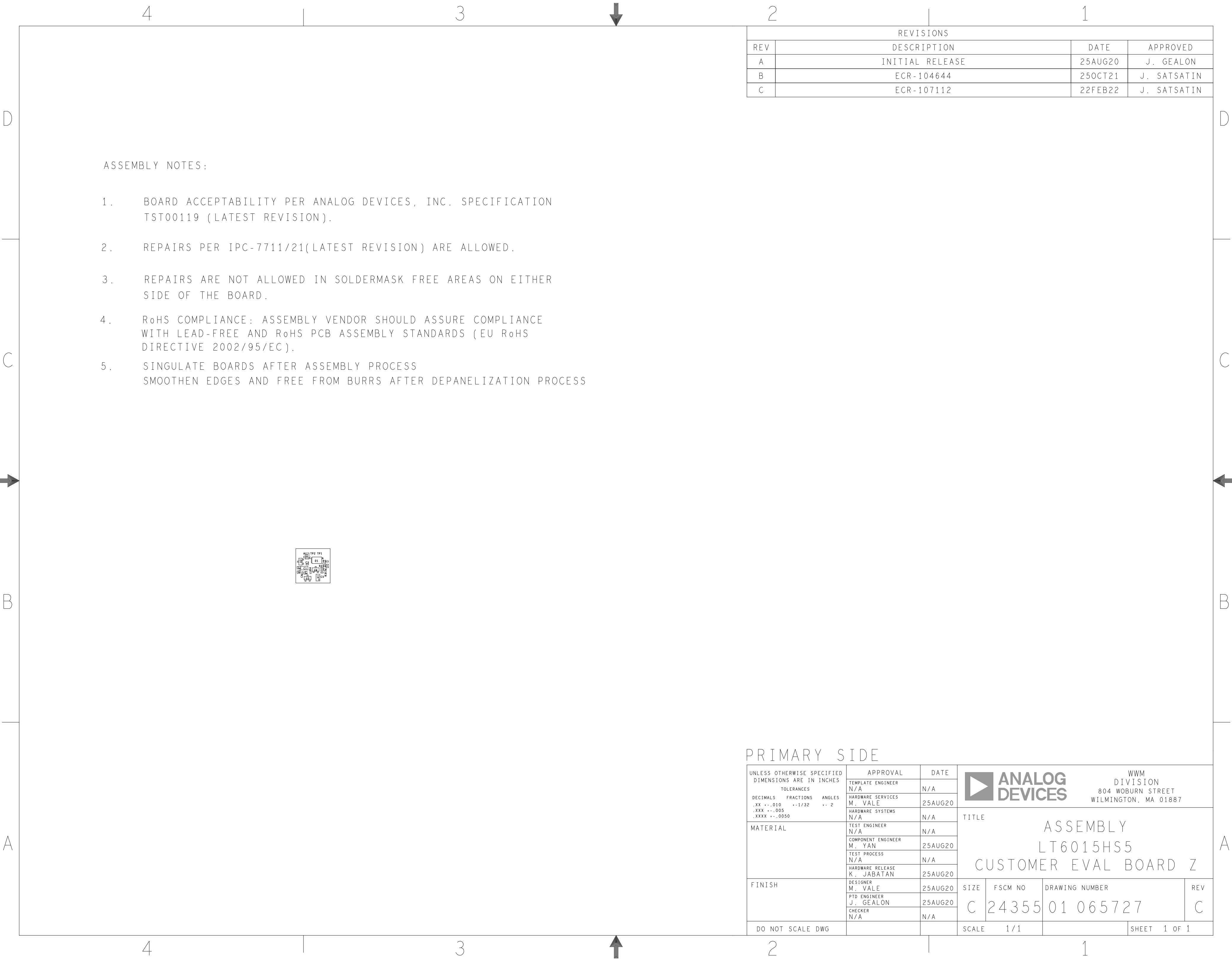
1

4

3

2


1



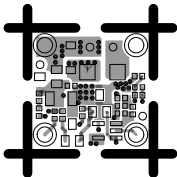
ASSEMBLY NOTES:

- 1. BOARD ACCEPTABILITY PER ANALOG DEVICES, INC. SPECIFICATION TST00119 (LATEST REVISION).
- 2. REPAIRS PER IPC-7711/21(LATEST REVISION) ARE ALLOWED.
- 3. REPAIRS ARE NOT ALLOWED IN SOLDERMASK FREE AREAS ON EITHER SIDE OF THE BOARD.
- 4. RoHS COMPLIANCE: ASSEMBLY VENDOR SHOULD ASSURE COMPLIANCE WITH LEAD-FREE AND RoHS PCB ASSEMBLY STANDARDS (EU RoHS DIRECTIVE 2002/95/EC).
- 5. SINGULATE BOARDS AFTER ASSEMBLY PROCESS
SMOOTHEN EDGES AND FREE FROM BURRS AFTER DEPANELIZATION PROCESS

REVISIONS			
REV	DESCRIPTION	DATE	APPROVED
A	INITIAL RELEASE	25AUG20	J. GEALON
B	ECR-104644	25OCT21	J. SATSATIN
C	ECR-107112	22FEB22	J. SATSATIN

PRIMARY SIDE			
UNLESS OTHERWISE SPECIFIED DIMENSIONS ARE IN INCHES TOLERANCES DECIMALS FRACTIONS ANGLES .XX -.010 --1/32 -- 2 .XXX -.005 .XXXX -.0050	APPROVAL	DATE	<div> ANALOG DEVICES</div> <div>WWM DIVISION 804 WOBURN STREET WILMINGTON, MA 01887</div>
	TEMPLATE ENGINEER N/A	N/A	
	HARDWARE SERVICES M. VALE	25AUG20	
	HARDWARE SYSTEMS N/A	N/A	
MATERIAL	TEST ENGINEER N/A	N/A	TITLE ASSEMBLY LT6015HS5 CUSTOMER EVAL BOARD Z
	COMPONENT ENGINEER M. YAN	25AUG20	
	TEST PROCESS N/A	N/A	
	HARDWARE RELEASE K. JABATAN	25AUG20	
FINISH	DESIGNER M. VALE	25AUG20	SIZE FSCM NO DRAWING NUMBER REV C 24355 01 065727 C
	PTD ENGINEER J. GEALON	25AUG20	
	CHECKER N/A	N/A	
	DO NOT SCALE DWG		
		SCALE 1/1	SHEET 1 OF 1

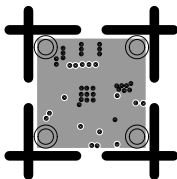
L1 PRIMARY
08-065727-01
REV C



L2 GND

08-065727-07

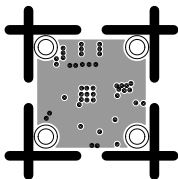
REV C



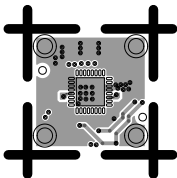
L3 VCC

08-065727-08

REV C



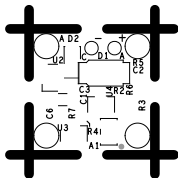
L4 SECONDARY
08-065727-02
REV C



SILKSCREEN PRIMARY

08-065727-03

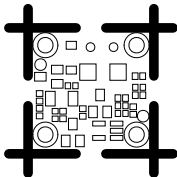
REV C



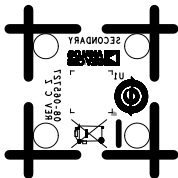
SOLDERMASK PRIMARY

08-065727-04

REV C



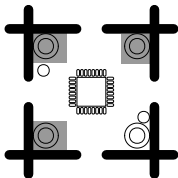
SILKSCREEN SECONDARY
08-065727-05
REV C



SOLDERMASK SECONDARY

08-065727-06

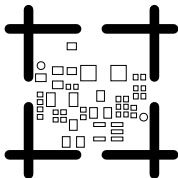
REV C

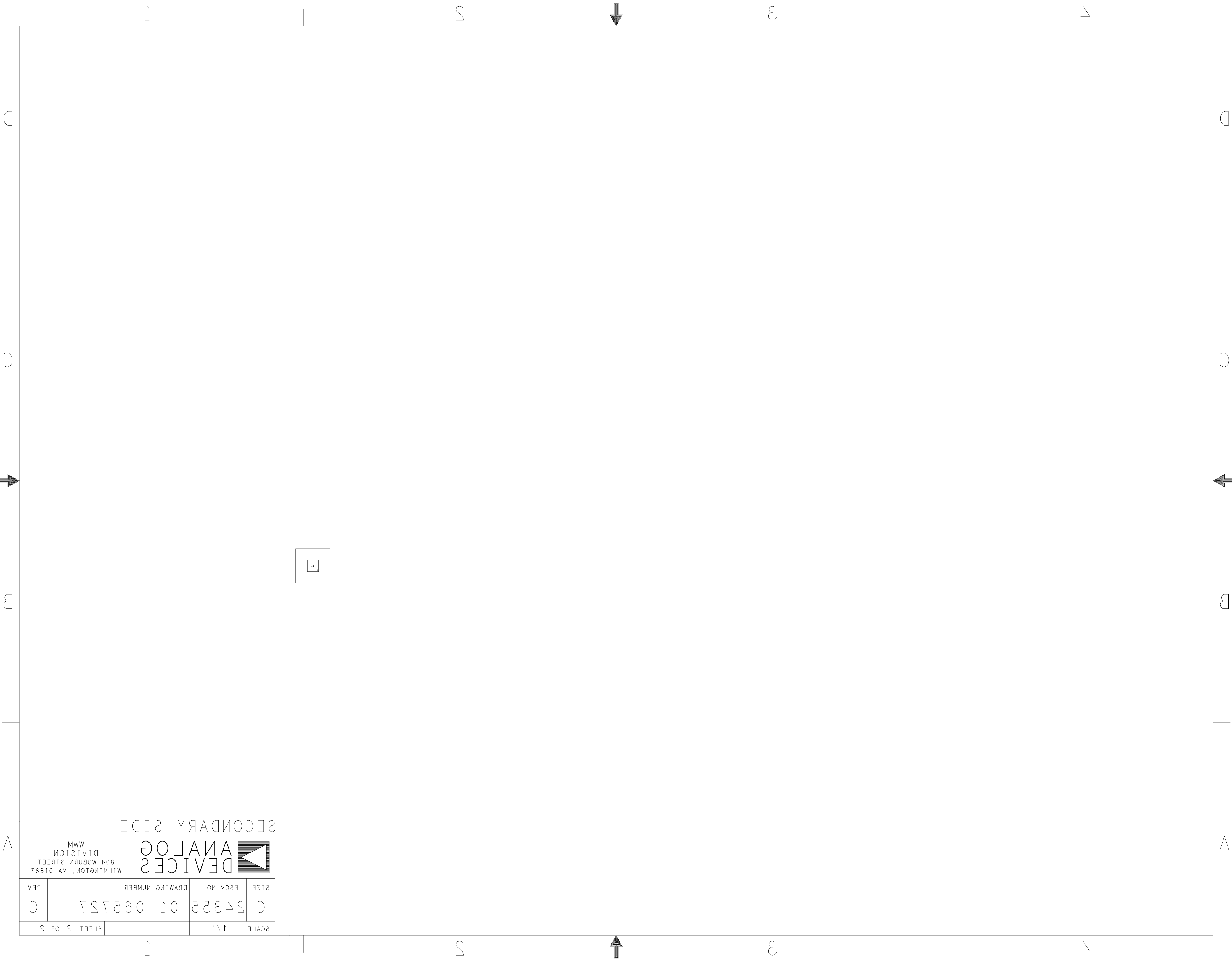


PASTEMASK PRIMARY

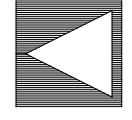
08-065727-09

REV C





SCALE 1/1		DRAWING NUMBER	
C	54352	01-002757	REV
ANALOG DEVICES		DIVISION	
804 WOBURN STREET		WILMINGTON, MA 01887	
MWM		SHEET 5 OF 5	



SECONDARY SIDE

PASTEMASK SECONDARY
08-065727-10
REV C

